



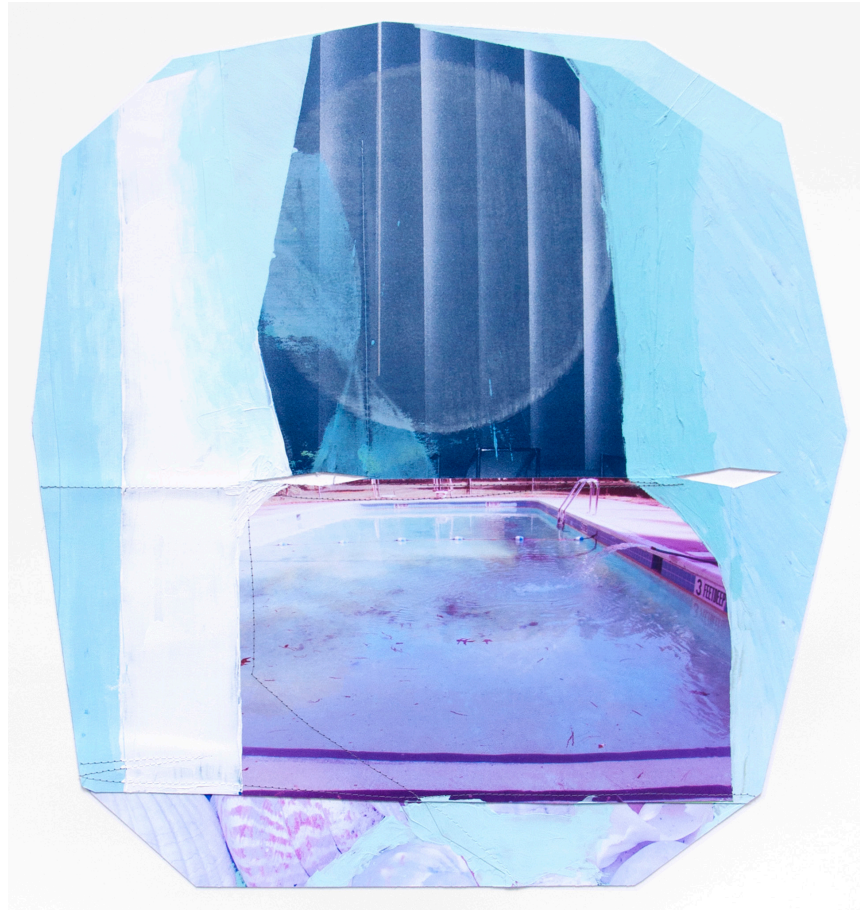
# Night Swimming

Jude Broughan



**New Moon (The Brine, getting out)**

The briny deep, the big drink  
Imagined contingency from  
Brooklyn Navy Yard to  
Tauranga harbor on a cargo ship.  
My 19th century British colonial forebears  
Three months at sea  
Past Cape Town and Hobart  
To New Zealand



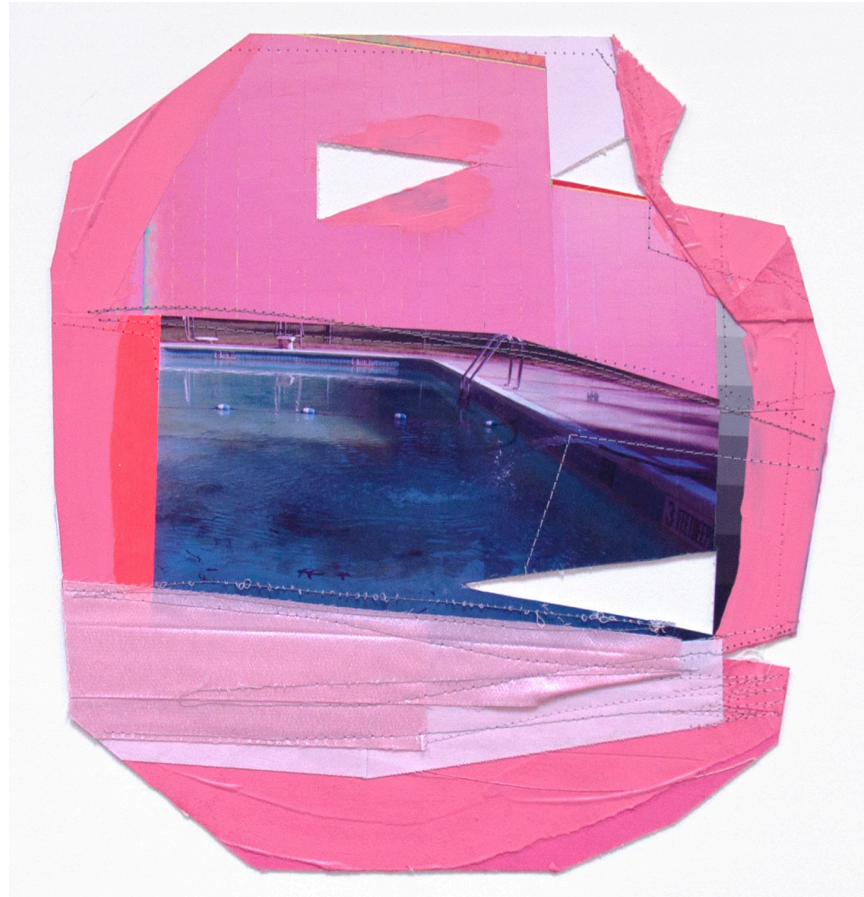
### Waxing Crescent Moon (Night Swimming, lamination)

Eight phases of the Moon  
Many moons to go  
Night swimming, mysterious wildlife  
Leaves decompose and algae grow  
Water Nature's midwife  
All born bare in the flow



### First Quarter Moon (Hydrangea)

Waxing and waning of the moon  
The size of the works and the shapes  
Are around the size of my hips  
Frida Kahlo and Georgia O'Keefe clothing  
museum shows, the emphasis on their bodies  
The emphasis on my own body



**Waxing Gibbous Moon**  
(Pool V, The Geometry of Art and Life)

Curvature of the earth  
Natural curve, arm arch  
Curve of a road, acceleration  
Maintenance, painting fences in Brooklyn  
Necessary repairs, Titanic hull  
Flat world, round earth  
Shape in front of us, field of vision  
New axis, new frame



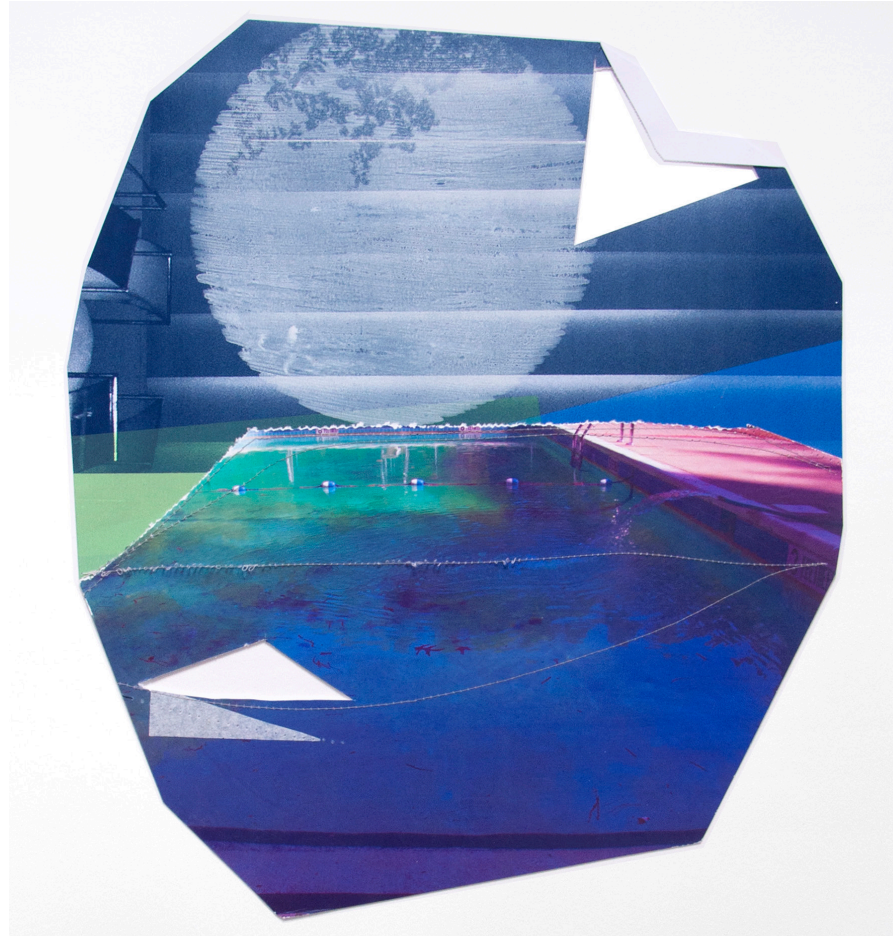
### Full Moon (Pool IV)

Origami folded space stations pop up  
Same process, different scale  
Making frosting and mixing cement  
Same process, different scale  
Marks with a staple gun, stitching thread  
Pierced and connected



### Waning Gibbous Moon (Pool III)

Intervals between the zig zag  
Tacking back and forth  
Sailing in choppy waters  
Constant course correction  
No direct line to a destination  
A give and take conversation



### Third Quarter Moon (Pool II)

Intoxicating artfair neon  
Actually Chinatown neon  
Gesture of a handbag  
Art world accessory  
Neon eye grabbing  
Maybe like Miami Wynwood Walls  
Murals and street art  
Neon also signaling accessibility  
A store sign OPEN





### Waning Crescent Moon (Fuchsia)

Items are used well  
A porch with mismatched chairs  
Quiet and captivated  
Let your eyes adjust  
Second hand crafted  
Salt of the earth

## Works

New Moon (The Brine, getting out), 2020  
Pigment prints, paint, thread, paper. 22 x 24 inches

Waxing Crescent Moon (Night Swimming, lumination), 2020  
Pigment prints, paint, thread, paper. 22 x 24 inches

First Quarter Moon (Hydrangea), 2020  
Pigment print, polyester, paint, thread, paper. 22 x 22 inches

Waxing Gibbous Moon (Pool V, The Geometry of Art and Life), 2019  
Pigment prints, thread, paper. 20 x 21 inches

Full Moon (Pool IV), 2020  
Pigment prints, thread, paper. 22 x 24 inches

Waning Gibbous Moon (Pool III), 2019  
Pigment prints, polyester, thread, paper. 22 x 23 inches

Third Quarter Moon (Pool II), 2019  
Pigment prints, thread, paper. 22 x 24 inches

Waning Crescent Moon (Fuchsia), 2020  
Pigment prints, polyester, paint, thread, paper. 22 x 24 inches